

State of Wyoming Corner Record

(In compliance with the *CORNER PERPETUATION AND FILING ACT*, Wyoming Statutes, 1997 Section 33-29-140 et. seq., and the Rules and Regulations of the Board of Professional Engineers and Professional Land Surveyors)

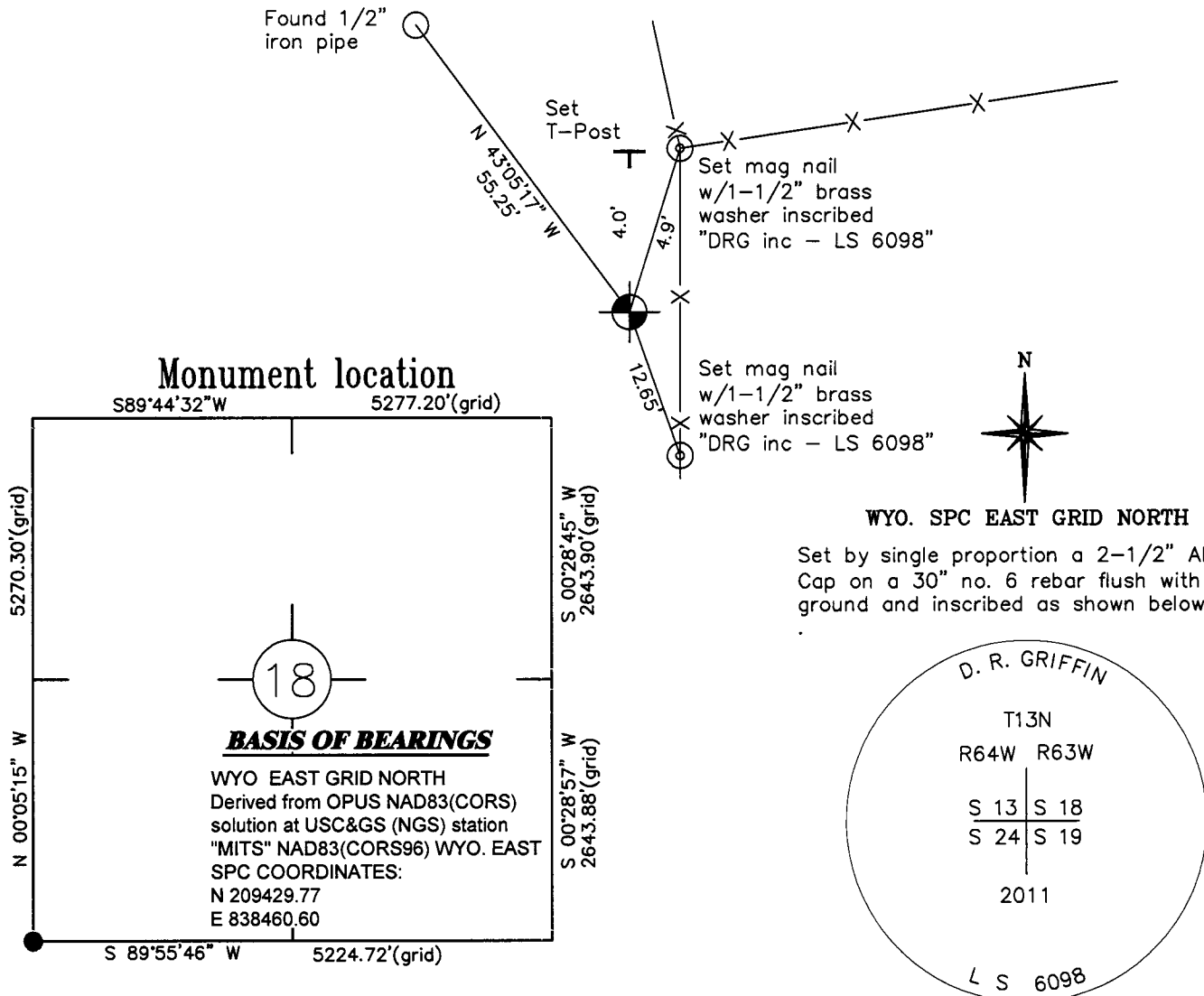
Reverse side of this form may be used if more space is needed.

Record of original survey and citation of source of historical information (if corner is lost or obliterated). Description of corner monumentation evidence found and/or monument and accessories established to perpetuate the location of adjacent corner. Sketch of relative location of monument, accessories, and reference points with course and distance to adjacent corner(s) (if determined in this survey). Method and rationale for reestablishment of lost or obliterated corner.

U.S.G.L.O. 1870 Record: Set a limestone 15x10x5 for corner to sections 13, 24, 18 & 19.

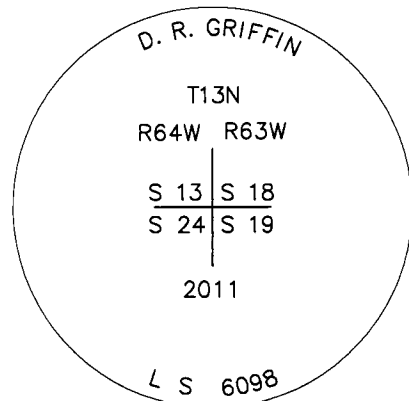
No Evidence of monument or accessories found. Corner is lost.

Establish corner position by single proportion from the found monument (no. 4 rebar) for the southwest corner of Section 19 and the found monument (no. 4 rebar) for the northwest corner of Section 18. Set a 2-1/2" Aluminum Cap on a 30" no. 6 rebar flush with the ground and inscribed as shown below.



WYO. SPC EAST GRID NORTH

Set by single proportion a 2-1/2" Aluminum Cap on a 30" no. 6 rebar flush with the ground and inscribed as shown below.



Monument Inscription

Date of Field Work: 3/8/11

Office Reference: 18323

Cross Index Plat

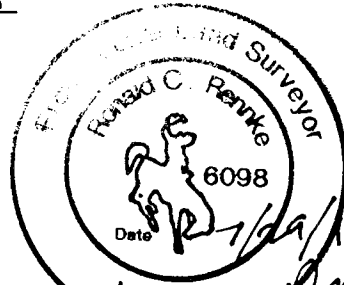
1	2	3	4	5	6	7	8	9	10	11	12	13	14	15	16	17	18	19	20	21	22	23	24	25		
A	+	+	+	+	+	+	+	+	+	+	+	+	+	+	+	+	+	+	+	+	+	+	+	+	A	
B	+	6	+	5	+	4	+	3	+	2	+	1	+	C											C	
C	+	+	+	+	+	+	+	+	+	+	+	+	+	D											D	
D	+	+	+	+	+	+	+	+	+	+	+	+	+	E											E	
E	+	+	+	+	+	+	+	+	+	+	+	+	+	F											F	
F	+	+	+	+	+	+	+	+	+	+	+	+	+	G											G	
G	+	7	+	8	+	9	+	10	+	11	+	12	+	H											H	
H	+	+	+	+	+	+	+	+	+	+	+	+	+	I											I	
I	+	+	+	+	+	+	+	+	+	+	+	+	+	J											J	
J	+	+	+	+	+	+	+	+	+	+	+	+	+	K											K	
K	+	+	+	+	+	+	+	+	+	+	+	+	+	L											L	
L	+	18	+	17	+	16	+	15	+	14	+	13	+	M											M	
M	+	+	+	+	+	+	+	+	+	+	+	+	+	N											N	
N	+	+	+	+	+	+	+	+	+	+	+	+	+	O											O	
O	+	+	+	+	+	+	+	+	+	+	+	+	+	P											P	
P	+	19	+	20	+	21	+	22	+	23	+	24	+	Q											Q	
Q	+	+	+	+	+	+	+	+	+	+	+	+	+	R											R	
R	+	+	+	+	+	+	+	+	+	+	+	+	+	S											S	
S	+	+	+	+	+	+	+	+	+	+	+	+	+	T											T	
T	+	30	+	29	+	28	+	27	+	26	+	25	+	U											U	
U	+	+	+	+	+	+	+	+	+	+	+	+	+	V											V	
V	+	+	+	+	+	+	+	+	+	+	+	+	+	W											W	
W	+	+	+	+	+	+	+	+	+	+	+	+	+	X											X	
X	+	31	+	32	+	33	+	34	+	35	+	36	+	Y											Y	
Y	+	+	+	+	+	+	+	+	+	+	+	+	+	Z											Z	
Z	+	+	+	+	+	+	+	+	+	+	+	+	+													

Firm/Agency, Address

RONALD C. RENNKE
D. R. GRIFFIN & ASSOCIATES
1414 ELK STREET
ROCK SPRINGS, WYOMING 82901
 Telephone Number: (307) 362-5028

This corner record was prepared by me or under my direction and supervision.

SEAL & SIGNATURE



Ronald C. Renke



RECORDED 8/09/2011 AT 10:09 AM REC# 573732 BK# 2231 PG# 416
 DEBRA K. LATHROP, CLERK OF LARAMIE COUNTY, WY PAGE 1 OF 1

Cross-Index No.: N-5
 Cross-Index No.: N-25

Corner Name Southwest Corner Section 18, T 13 N, R 63 W, 6th P.M.
 Same as Southeast Corner Section 13, T 13 N, R 64 W, 6th P.M.
 County: Laramie, Wyoming

SBRPEPLS/PLSW: March 1994; PLSW January 1998